

LEE-560-24-STD-281-SAM
LEE-280-24-STD-281-SAM
LEE-140-24-STD-281-SAM
LEE-47-24-STD-281-SAM

Application



LEE-280-24-STD-281-SAM DISPLAYED

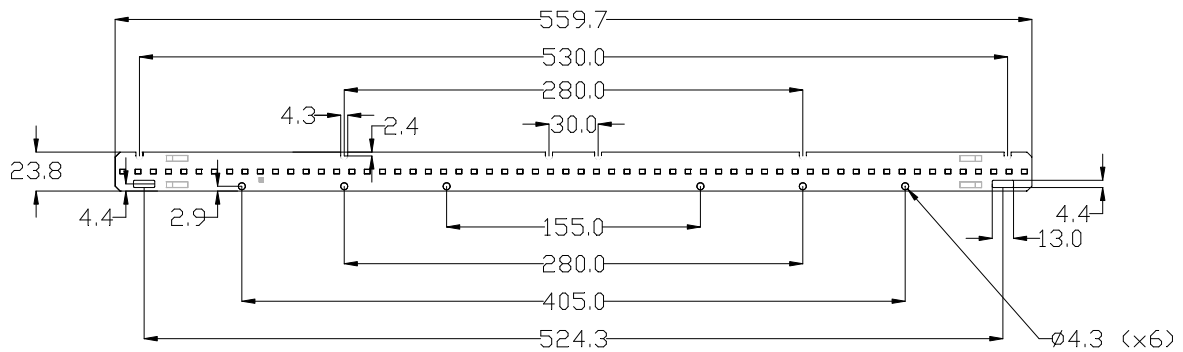
Key Features

LED type	Samsung LM281B plus mid power		
LED pitch	9.33mm		
Supply type	Constant Current		
Lumen package	140mm:1088lm	280mm: up to 2177lm	560mm: up to 4353lm
Luminous efficiency	Up to 197 lm/W		
Colour temperature	3000K, 4000K and 5700K as standard	Other CCTs on request	
CRI	>80 (typical 84) as standard	>90 on request	
Life expectancy	>100,000 hours		
Guarantee	5 years		
Additional notes	Push-Fit terminals for simple and easy wiring		
	Dimming sensor and emergency compatible		
	Designed for industry standard LED drivers		

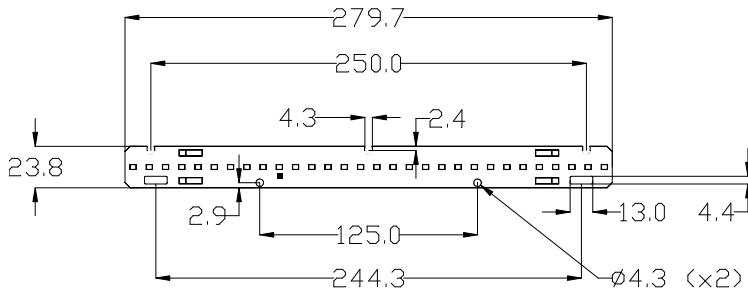


Dimensions

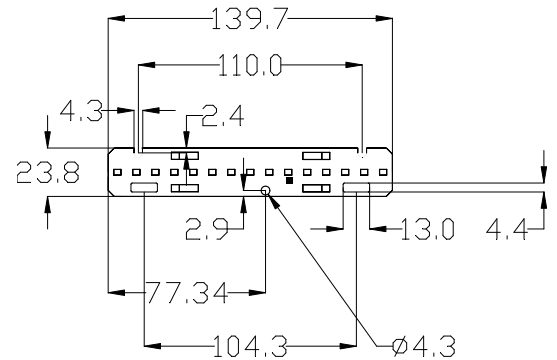
LEE-560-24-STD-281-SAM



LEE-280-24-STD-281-SAM



LEE-140-24-STD-281-SAM



Unit height 6.1mm (PCB & components)

Connection 2 x single pole push fit connectors (+/-) mounted at opposite ends
Additional 2 x single pole push fit connectors for common return (optional)

Wire 18AWG-26AWG (0.75-0.14mm²) solid or stranded wire

Fixing Zhaga compliant mounting points (locating screws not provided)

Unit weight 560: 46g

280: 23g

140: 13g

LED count 560: 60

280: 30

140: 15



Range Performance Data

LEE-560-24-STD-281-SAM

Order Code	Product Reference	Drive Current (mA)	Typ. Forward Voltage @ Tc= 25 °C (V)	Typ. Power Consumption @ Tc= 25°C (W)	Typ. Luminous Flux @ Tc= 25 °C (lm)	Typ. Luminous Efficiency @ Tc= 25 °C (lm/W)	Typ. Forward Voltage @ Tc= 65 °C (V)	Typ. Power Consumption @ Tc= 65°C (W)	Typ. Luminous Flux @ Tc= 65 °C (lm)	Typ. Luminous Efficiency @ Tc= 65 °C (lm/W)
Order codes see Page 5	LEE-560-24-STD-281-SAM-830	350	32.9	11.5	2195	191	32.2	11.3	2064	183
		500	33.7	16.9	3095	184	33.0	16.5	2909	176
		700	34.6	24.2	4223	174	33.9	23.7	3969	167
	LEE-560-24-STD-281-SAM-840	350	32.9	11.5	2263	197	32.2	11.3	2127	189
		500	33.7	16.9	3191	189	33.0	16.5	2999	182
		700	34.6	24.2	4353	180	33.9	23.7	4092	172
	LEE-560-24-STD-281-SAM-857	350	32.9	11.5	2241	195	32.2	11.3	2106	187
		500	33.7	16.9	3159	187	33.0	16.5	2969	180
		700	34.6	24.2	4310	178	33.9	23.7	4051	171

LEE-280-24-STD-281-SAM

Order Code	Product Reference	Drive Current (mA)	Typ. Forward Voltage @ Tc= 25 °C (V)	Typ. Power Consumption @ Tc= 25°C (W)	Typ. Luminous Flux @ Tc= 25 °C (lm)	Typ. Luminous Efficiency @ Tc= 25 °C (lm/W)	Typ. Forward Voltage @ Tc= 65 °C (V)	Typ. Power Consumption @ Tc= 65°C (W)	Typ. Luminous Flux @ Tc= 65 °C (lm)	Typ. Luminous Efficiency @ Tc= 65 °C (lm/W)
Order codes see Page 5	LEE-280-24-STD-281-SAM-830	350	16.5	5.8	1098	191	16.1	5.6	1032	183
		500	16.9	8.4	1548	184	16.5	8.3	1455	176
		700	17.3	12.1	2111	174	17.0	11.9	1985	167
	LEE-280-24-STD-281-SAM-840	350	16.5	5.8	1132	197	16.1	5.6	1064	189
		500	16.9	8.4	1595	189	16.5	8.3	1500	182
		700	17.3	12.1	2177	180	17.0	11.9	2046	172
	LEE-280-24-STD-281-SAM-857	350	16.5	5.8	1120	195	16.1	5.6	1053	187
		500	16.9	8.4	1579	187	16.5	8.3	1485	180
		700	17.3	12.1	2155	178	17.0	11.9	2026	171

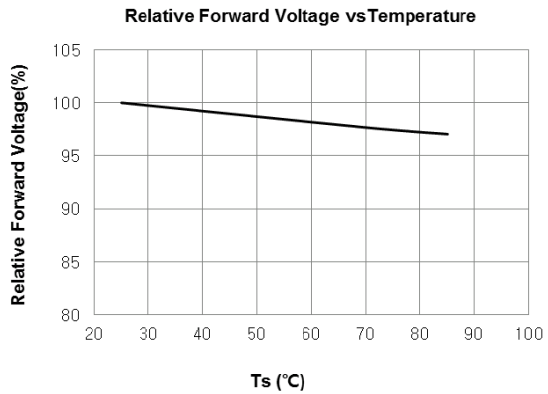
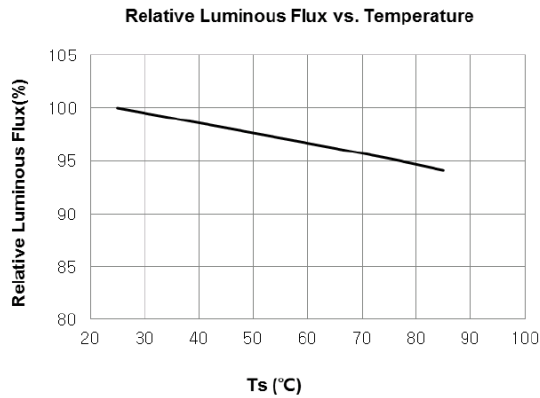
LEE-140-24-STD-281-SAM

Order Code	Product Reference	Drive Current (mA)	Typ. Forward Voltage @ Tc= 25 °C (V)	Typ. Power Consumption @ Tc= 25°C (W)	Typ. Luminous Flux @ Tc= 25 °C (lm)	Typ. Luminous Efficiency @ Tc= 25 °C (lm/W)	Typ. Forward Voltage @ Tc= 65 °C (V)	Typ. Power Consumption @ Tc= 65°C (W)	Typ. Luminous Flux @ Tc= 65 °C (lm)	Typ. Luminous Efficiency @ Tc= 65 °C (lm/W)
Order codes see Page 5	LEE-140-24-STD-281-SAM-830	350	8.2	2.9	549	191	8.1	2.8	516	183
		500	8.4	4.2	774	184	8.3	4.1	727	176
		700	8.7	6.1	1056	174	8.5	5.9	992	167
	LEE-140-24-STD-281-SAM-840	350	8.2	2.9	566	197	8.1	2.8	532	189
		500	8.4	4.2	798	189	8.3	4.1	750	182
		700	8.7	6.1	1088	180	8.5	5.9	1023	172
	LEE-140-24-STD-281-SAM-857	350	8.2	2.9	560	195	8.1	2.8	527	187
		500	8.4	4.2	790	187	8.3	4.1	742	180
		700	8.7	6.1	1077	178	8.5	5.9	1013	171

*All electrical and optical data subject to ±10% tolerance.



Temperature



Technical Data

Tc rated	80°C			
Rated DC forward Current	700mA			
Max. DC forward current	1000mA			
Max. permissible peak current	1500mA (max. 10ms)			
Rated power	560: 26.6W	280: 13.3W	140: 6.7W	47: 2.2W
Max permissible output voltage	250V			
ESD classification	Class 3A			
Risk group (EN 62471:2008)	RG1			

Lifetime Expectations

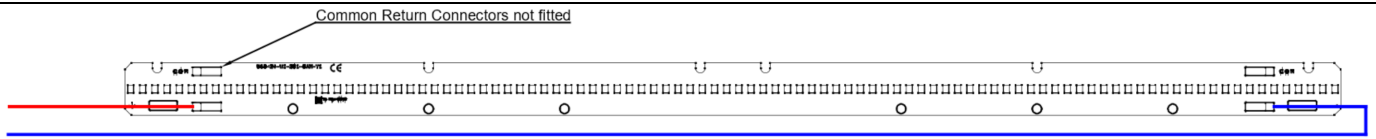
		LxBy					
		70		80		90	
		10	50	10	50	10	50
@Imax	Tc=50°C	127,000	173,000	81,000	109,000	40,000	53,000
@Imax	Tc=65°C	119,000	158,000	75,000	100,000	37,000	48,000
@Imax	Tc=80°C	111,000	144,000	70,000	91,000	35,000	44,000

*Lifetime expectations provided as guidance only.



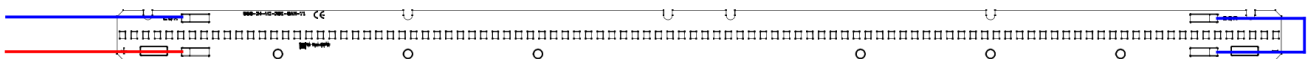
Order codes

Common Return Connectors NOT Fitted



Order Code	Product Reference
LE426	LEE-560-24-STD-281-SAM-830
LE427	LEE-560-24-STD-281-SAM-840
LE428	LEE-560-24-STD-281-SAM-857
LE423	LEE-280-24-STD-281-SAM-830
LE424	LEE-280-24-STD-281-SAM-840
LE425	LEE-280-24-STD-281-SAM-857
LE420	LEE-140-24-STD-281-SAM-830
LE421	LEE-140-24-STD-281-SAM-840
LE422	LEE-140-24-STD-281-SAM-857
LE483	LEE-47-24-STD-281-SAM-830
LE482	LEE-47-24-STD-281-SAM-840
LE484	LEE-47-24-STD-281-SAM-857

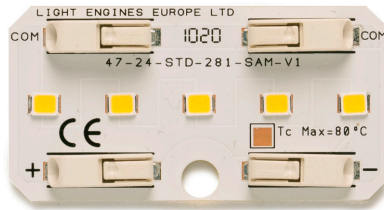
Common Return Connectors Fitted



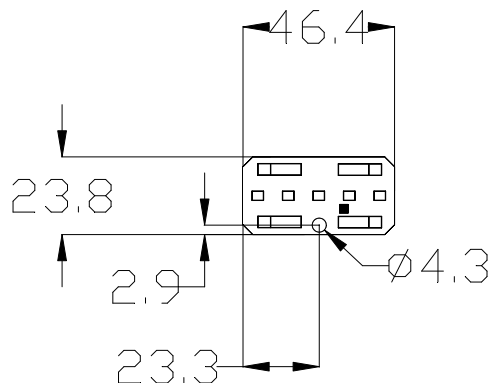
Order Code	Product Reference
LE446	LEE-560-24-STD-281-SAM-830
LE447	LEE-560-24-STD-281-SAM-840
LE448	LEE-560-24-STD-281-SAM-857
LE443	LEE-280-24-STD-281-SAM-830
LE444	LEE-280-24-STD-281-SAM-840
LE445	LEE-280-24-STD-281-SAM-857
LE440	LEE-140-24-STD-281-SAM-830
LE441	LEE-140-24-STD-281-SAM-840
LE442	LEE-140-24-STD-281-SAM-857
LE481	LEE-47-24-STD-281-SAM-830
LE480	LEE-47-24-STD-281-SAM-840
LE485	LEE-47-24-STD-281-SAM-857



LEE-47-24-STD-281-SAM Datasheet



Dimensions



Unit weight 6g

LED count 5

LEE-47-24-STD-GEN2-SAM

Order Code	Product Reference	Drive Current (mA)	Typ. Forward Voltage @ Tc= 25 °C (V)	Typ. Power Consumption @ Tc= 25°C (W)	Typ. Luminous Flux @ Tc= 25 °C (lm)	Typ. Luminous Efficiency @ Tc= 25 °C (lm/W)	Typ. Forward Voltage @ Tc= 65 °C (V)	Typ. Power Consumption @ Tc= 65°C (W)	Typ. Luminous Flux @ Tc= 65 °C (lm)	Typ. Luminous Efficiency @ Tc= 65 °C (lm/W)
Order codes see Page 5	LEE-47-24-STD-281-SAM-830	350	2.7	1.0	183	191	2.7	0.9	172	182
		500	2.8	1.4	258	184	2.8	1.4	242	175
		700	2.9	2.0	352	173	2.8	2.0	331	167
	LEE-47-24-STD-281-SAM-840	350	2.7	1.0	189	197	2.7	0.9	177	188
		500	2.8	1.4	266	190	2.8	1.4	250	181
		700	2.9	2.0	363	179	2.8	2.0	341	172
	LEE-47-24-STD-281-SAM-857	350	2.7	1.0	187	195	2.7	0.9	176	186
		500	2.8	1.4	263	188	2.8	1.4	247	179
		700	2.9	2.0	359	177	2.8	2.0	338	170

